

UB19 Hooded TileVent Modern (MD)



Product features and benefits

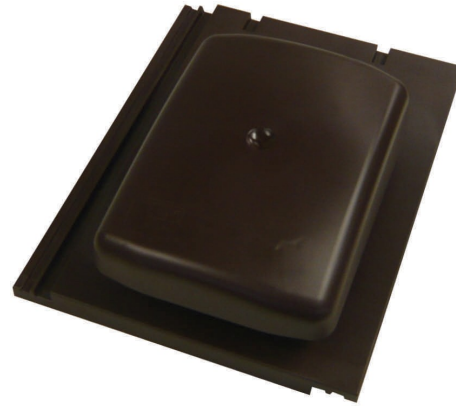
- 22,000mm² large free vent area
- Injection moulded construction

Application

- High or low level roof void ventilation
- Mechanical extraction when used with the Felt Sleeve and Stepped Adaptor
- Minimum pitch of 17.5°

Material

- PVC-U and Polyethylene



Dimensions

- L: 405mm x W: 325mm

Weight

- 0.800kg (including clip) per unit
- 4.8kg per box

Packaging

- 6 per box

Performance

- Provides 22,000mm² free vent area

Colours

- Red
- Anthracite
- Sepia

Product Code

- Red 100152290338
- Anthracite 100152290337
- Sepia 100152290336

NB: To convert to a terminal please add the Felt Sleeve and Stepped Adaptor 50544180

Spacing	5mm	10mm	25mm
M Centres	4.4	2.2	0.880