

UB30 WEP Wessex (WS)



Product features and benefits

- Pre shaped flashing unit for expansion extract/cable entry
- Pipe work/cable size up to 18mm

Application

- Suitable for various cables including; PV Systems, TV, Satellite.
- Minimum pitch of 17.5°

Material

- Base - Polyethylene
- Grommets - EDPM

Dimensions

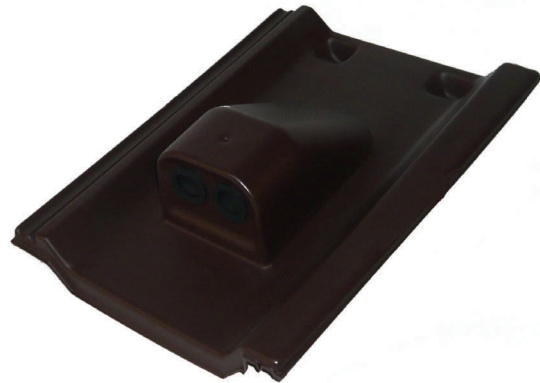
- L: 430mm x W: 330mm

Weight

- 0.52kg per unit

Packaging

- 1 per box



Colours

- Anthracite
- Sepia

Product Code

- Anthracite 20193436
- Sepia 20193429