

UB30 WEP Modern (MD)



Product features and benefits

- Pre shaped flashing unit for expansion extract/cable entry
- Pipe work/cable size up to 18mm

Application

- Suitable for various cables including; PV Systems, TV, Satellite.
- Minimum pitch of 17.5°

Material

- Base - Polyethylene
- Grommets - EDPM

Dimensions

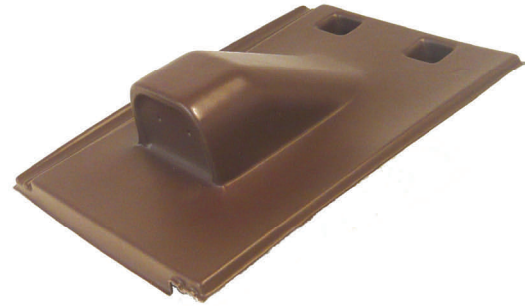
- L: 420mm x W: 330mm

Weight

- 0.48kg per unit

Packaging

- 1 per box



Colours

- Terracotta
- Anthracite
- Sepia

Product Code

- Terracotta 20193443
- Anthracite 20193467
- Sepia 20193450