

# Ubbink Universal Dry Verge System



## Key Features and Benefits

- Universal ambi unit, resulting in less stock holding
- Each ambi unit has a water drip channel, preventing water staining
- Suits popular profile roof tiles with a batten gauge range of 255mm to 355mm
- Suits the thin leading edge tile (additional cutting is required on ambi unit tabs)
- The starter unit gives a positive fixing point for the system and can be installed either with or without the gutter in place
- The batten bracket gives a secure fixing to the end of the batten. Also no measuring is required for the 30mm overhang of the batten as the batten bracket abuts a flush cut batten
- Suits roof pitches up to 55°

The Ubbink Universal Dry Verge is a mortar free system to mechanically fix the verge tiles according to BS5534. It is quick and easy to install.

The system offers integral solutions for a secure fixing to the roof. The starter unit at the eaves offers three different installation strategies, depending on the roof construction available:

- Fixing to the barge board
- Fixing to the fascia board
- Fixing to the lowest batten

## Material

### Ambi verge units

Material:	PP talc, UV resistant
Colour:	Grey and brown
Surface finish:	Matt

### Ridge end caps

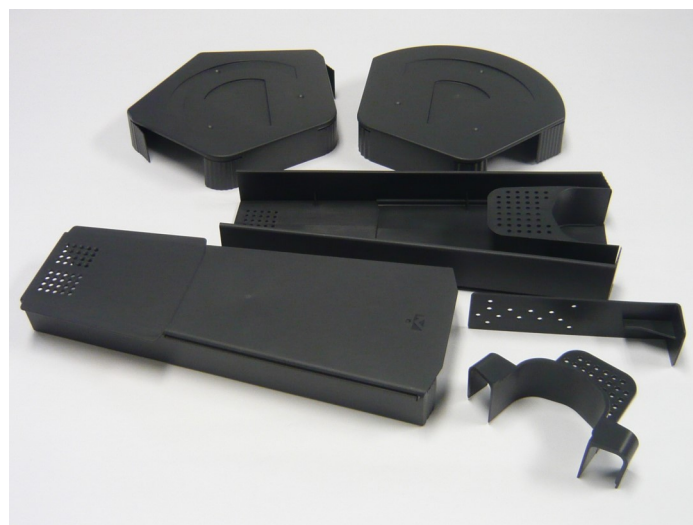
Material:	PP talc, UV resistant
Colour:	Grey and brown
Surface finish:	Matt

### Brackets

Material:	PP talc
Colour:	Grey
Surface finish:	Smooth

### Starter units

Material:	PP talc
Colour:	Grey
Surface finish:	Smooth



## Dry Verge System Components

- Ambi verge units
- Half round/segmental or universal angled ridge end cap
- Starter unit (incorporates closure)
- Batten bracket

## Colours

- Grey , Brown and Terracoota

## Weights and Packaging

### Ambi verge units

Packaging:	Bags of 10, box of 50
Single Unit weight:	0.215 KG

### Ridge end caps

Packaging:	Box of 10
Single Unit weight:	0.17 KG

### Brackets

Packaging:	Bags of 10, box of 50
Single Unit weight:	0.03 KG

### Starter units

Packaging:	Bags of 2, box of 20
Single Unit weight:	0.045 KG