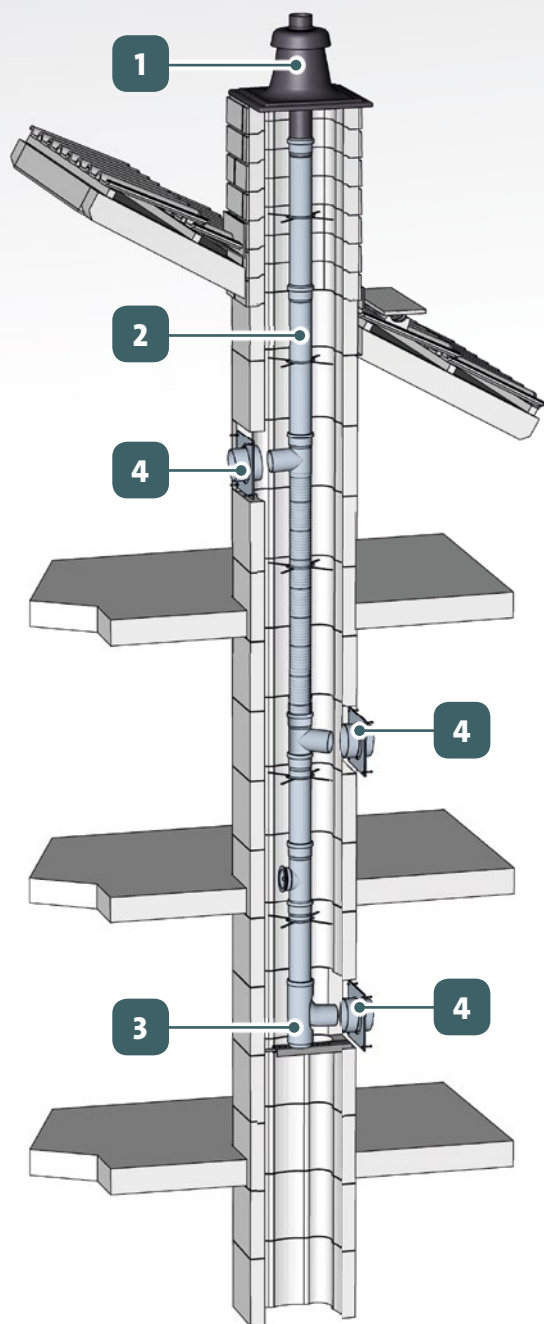




Flues and chimney systems

Complete systems overview

CLV systems single-wall



Description

- The single wall CLV system is a collective chimney system especially for apartment and residential buildings. It evacuates the individual flue through one common duct. The combustion air comes either from the chimney or from a separate air intake terminal. The flue pipe is made from PP.
- The system has a H1 tightness class which enables operation with positive pressure. This reduces the required diameters compared to a negative pressure system.
- T-pieces with 1 boiler connection are available. Each T-piece contains a compensator to absorb the elongation and shrinking of the PP flue pipes as result of temperature variations.
- A special ring in the T-piece ensures that condensate water flows back to each individual boiler. This limits drying-out of boiler siphons which are out of operation.

1

Terminal
→ page 40

2

In the chimney
→ page 40

3

System support
→ page 41

4

Boiler connection materials
→ page 52 for concentric materials
→ page 54 for single-wall materials

Technical details

CE marking	EN14471 T120 H1
Temperature class	T120
Seals	EPDM for flue pipe connections
Pressure class of the system	H1 (5.000 Pa)
Available diameters [mm]	110, 125, 160, 200
Installation types	C4, C8, C8x

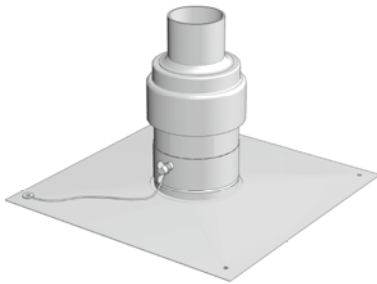
Features and benefits

- For multiple boiler installation
- For positive-pressure and negative-pressure installations
- Maximum number of boilers depending on national regulations
- Number of boilers per floor depending on installation of the various T-pieces
- Room sealed (type C) operation
- Reduced diameter of the flue
- Special ring in T-piece limits drying-out of boiler siphons
- PP pipes can be easily cut to adjust the length to the height of the room



1

Terminal



Chimney top terminal

- With outer part of INOX and exhaust pipe of PP or INOX

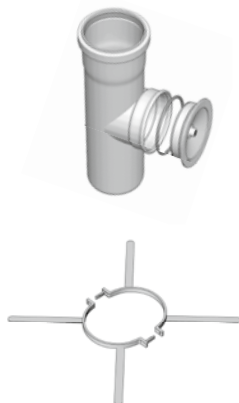
2

In the chimney



Chimney parts

- Flue pipes
- 15°, 30°, 45° and 87° bends
- Adaptors



Special parts

- Inspection parts
- Spacers
 - Damage prevention during installation
 - Available for relevant diameters

2

In the chimney

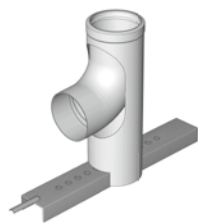


T-pieces with 1 connection

- A special ring in the T-piece ensures that condensate flows back to each individual boiler
- Each T-piece contains a compensator to absorb the elongation and shrinking of the PP pipes as result of the temperature variations

3

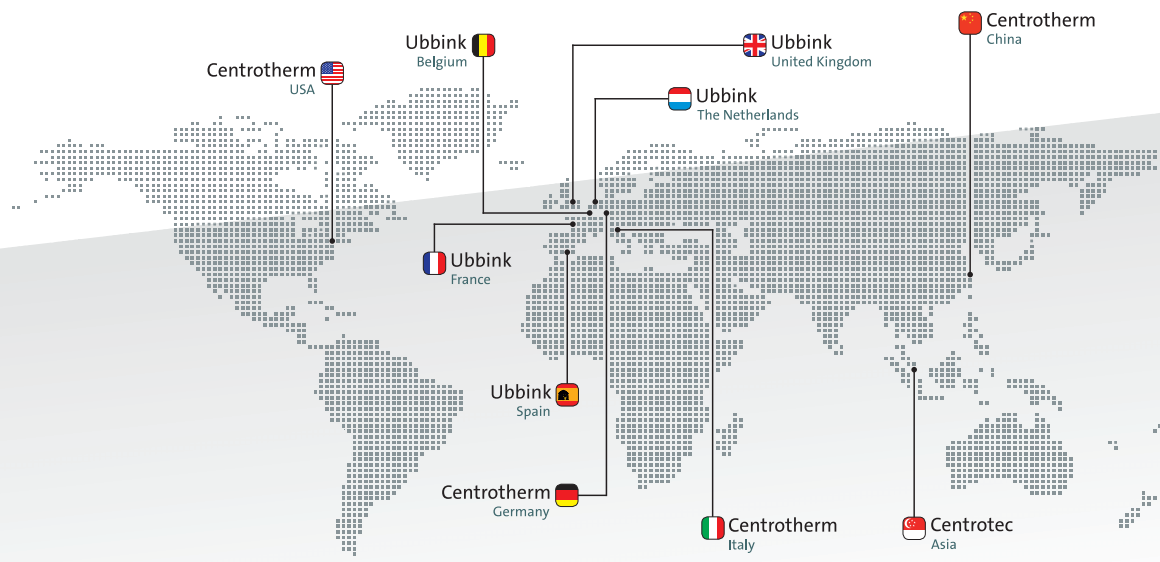
System support



Support parts

- It is extremely important to have a good support at the bottom of the chimney
- The smaller diameters consist of a horizontal rail with a bend

Ubbink Centrotherm group



- Ubbink Netherlands** www.ubbink.nl
- Ubbink Belgium** www.ubbink.be
- Ubbink France** www.ubbink.fr
- Ubbink Spain** www.ubbink.es
- Ubbink United Kingdom** www.ubbink.co.uk
- Centrotherm Germany** www.centrotherm.com
- Centrotherm Italy** www.centrotherm.it
- Centrotherm U.S.A.** www.centrotherm.us.com
- Centrotherm China** www.centrotherm-china.com

www.ubbink-centrotherm.com

© 2015 - Ubbink Centrotherm Group | Content is subject to change without notice | Availability and configurations may differ per country | UCG-2015-03-V01

